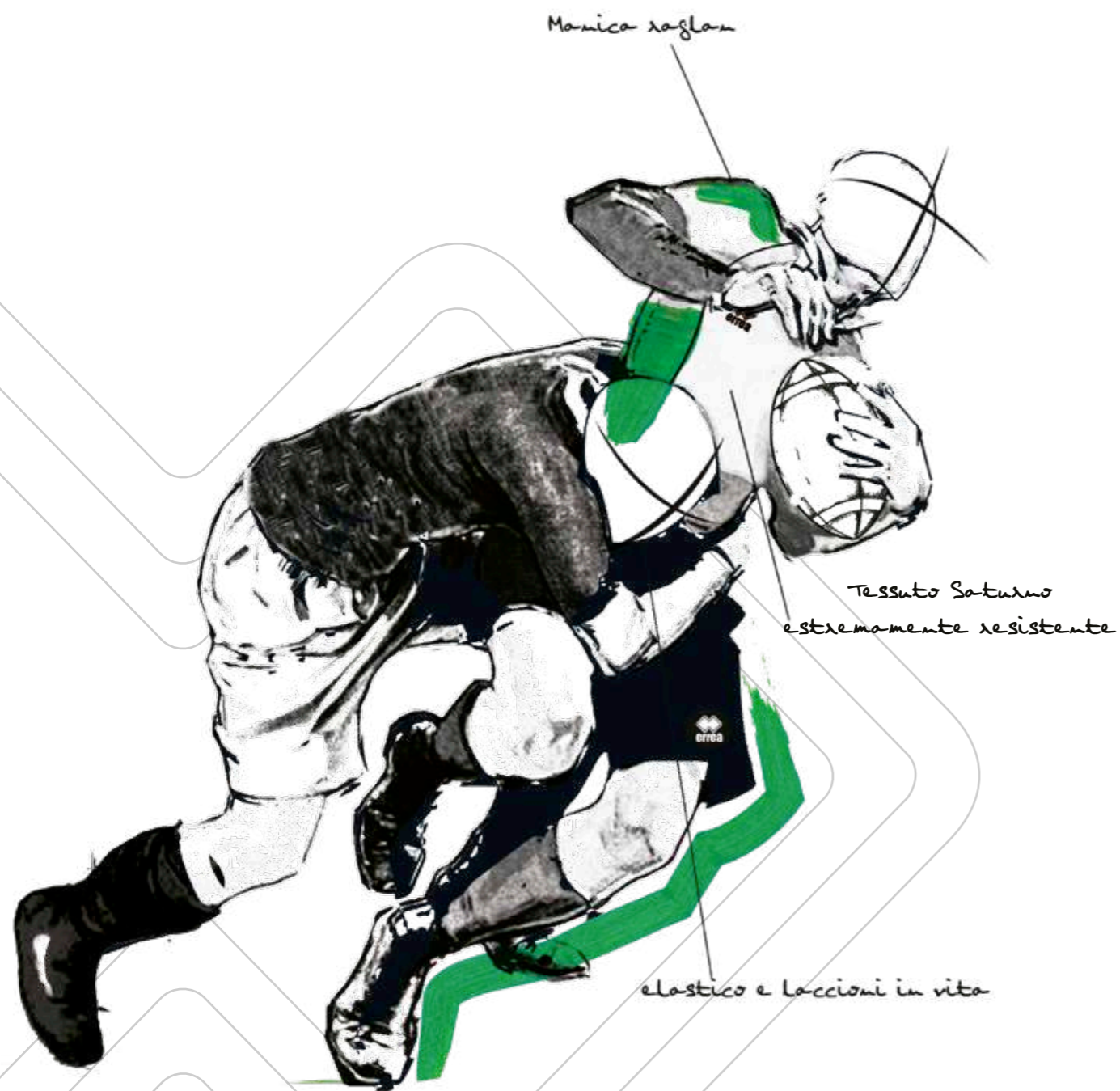




LINE
RUGBY

DESIGN BY
ERREÀ GRAPHIC DPT

2022
COLLECTION



FABRICS:

- Malaga
- Saturno Light
- Skin
- Roccia
- Rugby Stampa
- Rib Win

Errea
RUGBY

TREVISO 3.0

| | | | | | | |
|------|--|-----------------------|--|--------|------------------|--------|
| 2022 | | CUSTOM SUBLIMATION | OEKO-TEX® STANDARD 100 BY HANES COLLEGIATE | ADULT | S/M/L/XL/XXL/3XL | FM510C |
| | | | | JUNIOR | XXS/XS | FM511C |

SATURNO LIGHT 100% POLYESTER - 185 g/mq

- Maglia in transfer
- Manica raglan
- Collo a giro con parasudore interno
- Fianchette laterali
- Sublimated shirt
- Raglan sleeves
- Crew neck with internal elastic neck-tape
- Side panels
- Maillot sublimé
- Manches raglan
- Col rond avec bande de propriété interne
- Empiècements latéraux



SKARLET

2022



| | | |
|--------|------------------|--------|
| ADULT | S/M/L/XL/XXL/3XL | FM520C |
| JUNIOR | YXS/XXS/XS | FM521C |

SATURNO LIGHT 100% POLYESTER - 185 g/mq

- Manica raglan
- Collo a giro con parasudore interno
- Fianchette laterali
- Raglan sleeves
- Crew neck with internal elastic neck-tape
- Side panels
- Manches raglan
- Col rond avec bande de propriété interne
- Empiècements latéraux



00810
yellow/black



00010
white



02500
black/white



00500
red/white



00900
green/white



01500
blue/white



01900
navy/white



BREST
SHORT



AWHA

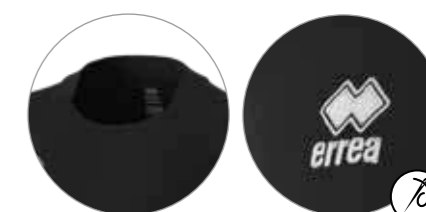
2024



| | | |
|--------|------------|--------|
| ADULT | S/M | GM0M0C |
| JUNIOR | YXS/XXS/XS | GM0M1C |

SKIN 100% POLYESTER - 125 g/mq

- Manica raglan
- Collo a giro con parasudore interno
- Raglan sleeves
- Crew neck with internal elastic neck-tape
- Manches raglan
- Col rond avec bande de propriété interne



00120
black



00020
red



00090
navy



EDMONTON 3.0

2024



ADULT S/M/L/XL/XXL/3XL/4XL/5XL

FJ0F0Z

JUNIOR YXS/XXS/XS

FJ0F1Z

RIB WIND 100% POLYESTER - 118 g/mq

- Cerniera half-zip laterale
- Polsini con elastico
- Inserto in contrasto
- Resistente ad acqua e pioggia
- Interno in rete
- Coulisse con fermalaccioli
- Half-zip on the side shoulder
- Elasticated cuffs
- Contrasting insert
- Water and rain resistant
- Mesh lining
- Drawstring with clip
- Zip à mi-hauteur latéral
- Poignets élastiques
- Insert en contraste
- Résistant à l'eau et à la pluie
- Doublure en mesh
- Coulisse avec zip-arrêt



00090
navy



00070
blue



00120
black

PLACER

2024

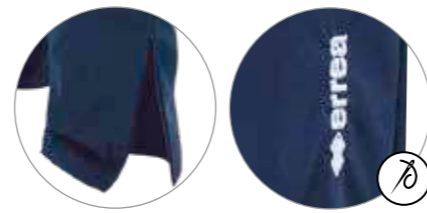


ADULT S/M/L/XL/XXL/3XL

C685

RIB WIND 100% POLYESTER - 118 g/mq

- Antipioggia
- Interno in cotone
- Tasche laterali
- Elastico e laccioli in vita
- Fondo con zip
- Rain trousers
- Lined in cotton
- Side pockets
- Elastic waistband and drawstring
- Zipped ankle cuffs
- Pantalon imperméable
- Intérieur coton
- Poches latérales
- Élastique et lacets à la taille
- Bas avec zippé



000009
navy



000012
black



RYUN



2024



ADULT S/M/L/XL/XXL/3XL/4XL
JUNIOR XS

FP730Z
FP731Z

ROCCIA 100% POLYESTER - 192 g/mq RIB WIND 100% POLYESTER - 118 g/mq
MALAGA 80% POLYAMIDE 20% ELASTANE - 190 g/mq

- Elastico in vita e laccioli regolabili
- Inserto laterale in tessuto Rib Wind
- Profilo laterale in contrasto
- Interno gamba in tessuto elasticizzato Malaga
- Elastic waistband and adjustable drawstring
- Lateral insert in Rib Wind fabric
- Contrasting trim on sides
- Inside leg in elasticated Malaga fabric
- Élastique à la taille et lacets réglables
- Pièce latérale en tissu Rib Wind
- Profil latéral en contraste
- Intérieur des jambes en tissu élastique Malaga



Back
02500
black/white



00300
white/grey



00500
red/white



01500
blue/white



01900
navy/white

MARU



ADULT S/M/L/XL/XXL/3XL/4XL
JUNIOR YXS/XXS/XS

PP6M3Z
PP6M4Z

SATURNO LIGHT 100% POLYESTER - 185 g/mq
MALAGA 80% POLYAMIDE 20% ELASTANE - 190 g/mq

- Elastico in vita e laccioli regolabili
- Inserto laterale e sottogamba elasticizzato in tessuto Malaga
- Elastic waistband and adjustable drawstring
- Inserts on sides and back of thigh in Malaga fabric
- Élastique à la taille et lacets réglables
- Pièce latérale et panneau sous-jambe élastique en tissu Malaga



02520
black/yellow



01900
navy/white

Esempio personalizzato - Example personalised - Exemple personnalisée

ARTUR



ADULT S
JUNIOR YXS/XXS/XS

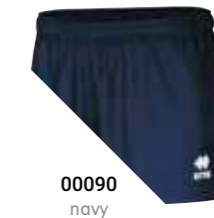
PP7L3Z
PP7L4Z

SKIN 100% POLYESTER - 125 g/mq

- Elastico in vita
- Laccioli regolabili
- Elastic waistband
- Adjustable drawstring
- Élastique à la taille
- Lacets réglables



00150
maroon



00090
navy



00120
black

Esempio personalizzato - Example personalised - Exemple personnalisée

BREST



2022



ADULT S/M/L/XL/XXL/3XL/4XL
JUNIOR YXS/XXS/XS
KID 2YXS

D4025
D4026
D4027

RUGBY STAMPA 100% POLYESTER - 275 g/mq

- Elastico in vita
- Laccioli regolabili
- Elastic waistband
- Adjustable drawstring
- Élastique à la taille
- Lacets réglables



000012
black



000001
white



000002
red



000004
green



000007
blue



000009
navy



000015
maroon

BULL-TERRIER

2023

100% POLYESTER

ADULT S/M/L/XL
JUNIOR XS

FA1D0Z
FA1D1Z

- Caschetto da rugby
- Garantisce massima protezione grazie al design ergonomico "head mapping"
- Realizzato in schiuma termoformata conforme alla regolamentazione World Rugby
- Approvato World Rugby
- Rugby helmet
- Guarantees maximum protection thanks to the ergonomic "head mapping" design
- Produced in heat-moulded foam in accordance with World Rugby regulations
- World Rugby approved
- Casque de rugby
- Assure une protection maximale grâce à sa forme ergonomique "head mapping"
- Réalisé en mousse thermoformée conforme à la réglementation du World Rugby
- Approuvé par le World Rugby



02530
black/green

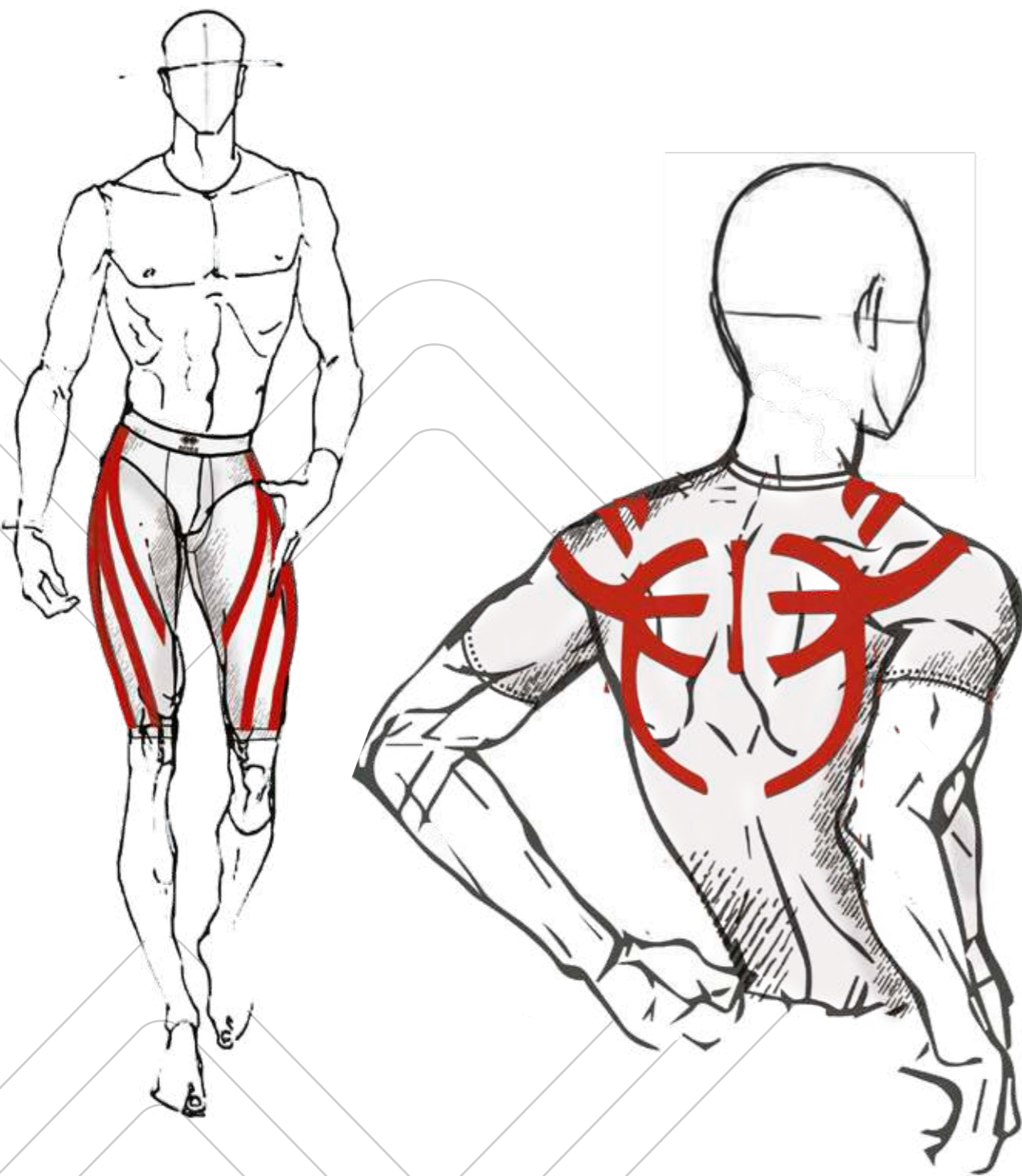




LINE
BASE LAYER

DESIGN BY
ERREÀ GRAPHIC DPT

2022
COLLECTION



FABRICS:

*Polyamide
Elastan*

Errea
BASE LAYER

TECNOLOGIA IN AZIONE

Dopo più di 3 anni di ricerche, decine di prototipi progettati e oltre 100 test approfonditi eseguiti da atleti professionisti di oltre 30 sport in gara e allenamento, Erreà Sport® presenta Active Tense®. Progettata grazie alla collaborazione di osteopati, fisioterapisti e atleti professionisti, ACTIVE TENSE® è l'esclusiva e unica linea di abbigliamento dotata di un esoscheletro flessibile interno a ogni capo. Active Tense® è ispirato al concetto di taping e della chinesioterapia e studiato con lo scopo di garantire un'ineguagliabile stabilizzazione delle articolazioni e dei muscoli durante l'attività fisica. Il disegno unico biodinamico di Active Tense® e la sua speciale costruzione ergonomica brevettata assicurano una perfetta aderenza al corpo seguendone i movimenti naturali. La speciale costruzione a superfici differenziate consente, inoltre, una rapida dispersione del sudore insieme a una ventilazione efficace in grado di mantenere il corpo asciutto per offrire il massimo comfort. Active Tense® è 100% Made in Italy e certificato OEKO-TEX® Standard 100 per garantire i massimi standard di sicurezza e qualità.

TECHNOLOGY IN ACTION

Following more than 3 years of research, dozens of prototypes and over 100 tests carried out by sporting professionals in more than 30 different disciplines in competitions and training, Erreà Sport® presents Active Tense®. Designed in collaboration with osteopaths, physiotherapists and professional athletes, ACTIVE TENSE® is the only line of sportswear to feature a flexible exoskeleton embedded in each garment. Active Tense® was inspired by kinesiology taping to provide exceptional joint and muscle stabilization during exercise. The unique biodynamic design of Active Tense® with its one-of-a-kind patented ergonomic design ensure the perfect fit while accompanying the body's natural movements. The use of multiple surfaces ensures rapid sweat dispersion and effective ventilation to keep the body dry and comfortable. Active Tense® is 100% Made in Italy and OEKO-TEX® Standard 100 certified to guarantee the highest safety and quality standards.

TECHNOLOGIE EN ACTION

Après plus de 3 ans de recherches, des dizaines de prototypes et plus de 100 tests approfondis exécutés par des athlètes professionnels de plus de 30 sports, pendant les compétitions et les entraînements, Erreà Sport® présente Active Tense®. Mise au point avec la coopération d'ostéopathes, physiothérapeutes et athlètes professionnels, ACTIVE TENSE® est une ligne de vêtements exclusive et unique dotée d'un exosquelette flexible inséré à l'intérieur de chaque vêtement. Active Tense® s'inspire du concept de « taping » et de la kinésiothérapie et a été conçue dans le but d'assurer une incomparable stabilisation des articulations et des muscles pendant l'activité sportive. L'exclusif dessin biodynamique d'Active Tense® et sa spéciale construction ergonomique brevetée assurent une adhérence parfaite au corps en accompagnant ses mouvements naturels. La construction spéciale à surfaces différenciées permet en outre une dispersion rapide de la sueur ainsi qu'une ventilation efficace pouvant maintenir le corps sec pour offrir le confort maximum. Active Tense® est 100% Made in Italy et certifié OEKO-TEX® Standard 100 pour assurer les niveaux maximums en termes de sécurité et qualité.

COME FUNZIONA

L'esoscheletro interno dei capi Active Tense® supporta i movimenti naturali del corpo, migliorando la postura senza limitare la libertà di movimento con un effetto stabilizzante sia attivo che passivo.

STABILIZZAZIONE ATTIVA

La stabilizzazione attiva è un supporto graduale ai muscoli e alle articolazioni che serve a migliorare i movimenti naturali del corpo, mantenendoli nel giusto binario ed evitando movimenti potenzialmente scorretti e dannosi.

STABILIZZAZIONE PASSIVA

La stabilizzazione passiva agisce da guida funzionale, suggerendo al corpo come mantenere una postura più appropriata e coadiuvando muscoli ed articolazioni a mantenere un adeguato allineamento. Active Tense® aiuta, inoltre, a ridurre le vibrazioni a cui sono sottoposti i muscoli e, quindi, l'affaticamento durante e dopo lo sforzo fisico, e a migliorare la propriocezione, ovvero la capacità di percepire e riconoscere la posizione del corpo nello spazio, sensibilità fondamentale per il controllo del movimento. Grazie all'elevato sostegno articolare e muscolare, e la conseguente riduzione dello stress corporeo, Active Tense® può anche promuovere un più rapido recupero post-infortunio.

HOW DOES IT WORK

The embedded exoskeleton in Active Tense® garments supports the body's natural movements by improving posture without inhibiting freedom of movement through a combination of active and passive stabilization.

ACTIVE STABILIZATION

Active stabilization offers graded muscle and joint support aimed at enhancing the body's natural movements, keeping them on the right path and eliminating movements that are wrong or unnatural.

PASSIVE STABILIZATION

Passive stabilization is a functional guide that encourages the body to adopt an appropriate posture and helps muscles and joints to stay properly aligned. Active Tense® reduces muscle vibration and therefore fatigue during and after exercise while improving proprioceptivity, the capacity to perceive and recognize the position of the body in space, a crucial aspect of movement control. Thanks to its exceptional levels of support for joints and muscles and the resulting reduction of stress for the body, Active Tense® also ensures improved post-injury recovery times.

COMMENT CELA FONCTIONNE

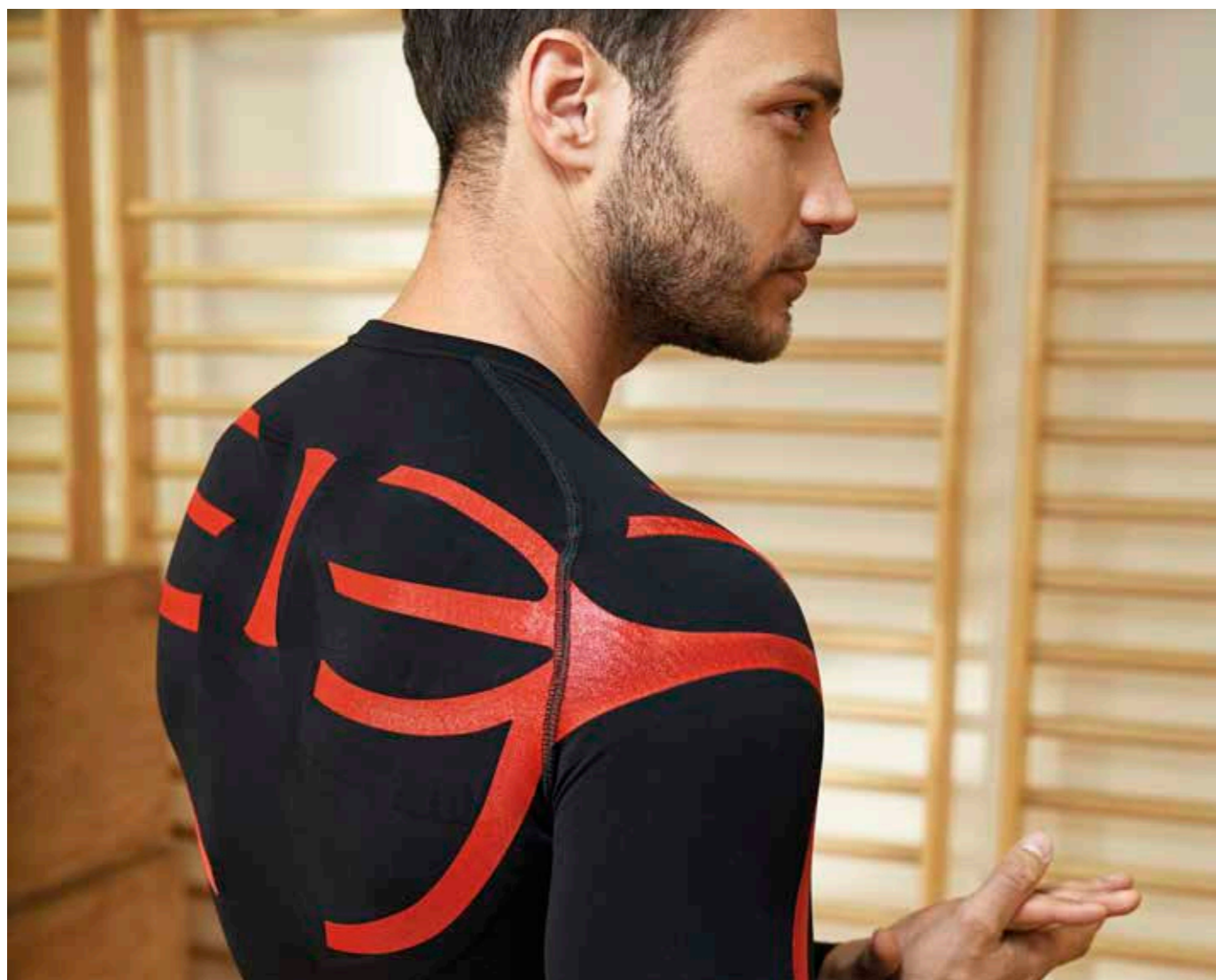
L'exosquelette interne des vêtements Active Tense® accompagne les mouvements naturels du corps, améliorant la posture sans limiter la liberté de mouvement avec un effet de stabilisation actif et passif.

STABILISATION ACTIVE

La stabilisation active offre un soutien graduel des muscles et des articulations servant à améliorer les mouvements naturels du corps, tout en les maintenant dans la position correcte et évitant des mouvements potentiellement erronés et dangereux.

STABILISATION PASSIVE

La stabilisation passive agit comme un guide fonctionnel, aidant le corps à maintenir une posture plus appropriée et permettant aux muscles et aux articulations de maintenir un alignement correct. Active Tense® aide en outre à limiter les vibrations auxquelles les muscles sont sujets et, par conséquent, la fatigue pendant et après l'effort physique ainsi qu'à améliorer leur proprioceptivité, soit la capacité de percevoir et reconnaître la position du corps dans l'espace, ce qui est fondamental pour le contrôle du mouvement. Grâce à l'excellent soutien articulaire et musculaire et à la limitation conséquente du stress corporel, Active Tense® pourrait aussi promouvoir une récupération plus rapide après un accident.



MIZAR

ACTIVE
TENS

| | | | | | | |
|------|--|---------------|--|--------|--------------|-------|
| 2024 | | MADE IN ITALY | OEKO-TEX® STANDARD 100 CERTIFIED | ADULT | S/M/L/XL/XXL | U700L |
| | | | | JUNIOR | XS | U701L |

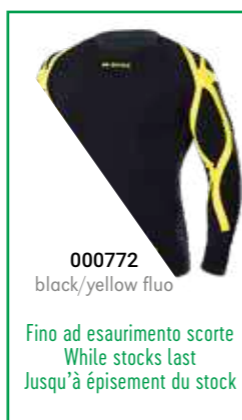
91% POLYAMIDE 9% ELASTAN



003708
white/cyan



002510
black/red



000772
black/yellow fluo

Fino ad esaurimento scorte
While stocks last
Jusqu'à épuisement du stock

- Collo a giro progettata per migliorare postura e rendimento
- Esoscheletro a supporto posturale
- Supporto mirato per i muscoli della parte alta della schiena, articolazioni delle spalle e cuffie dei rotatori
- Supporto extra per gomiti e muscoli delle braccia
- Fasce elastiche interne a sostegno del deltoide, tricipite e trapezio
- Riduzione della vibrazione muscolare
- Traspirante
- Inserimento di fibre di Elastan di alta qualità per mantenere sempre la forma dell'indumento
- Tessuto elastico senza cuciture

- Long-sleeve shirt scientifically engineered to improve posture and performance
- Exoskeleton for postural support.
- Targeted support for the muscles in the upper part of the back, shoulders and rotator cuffs.
- Extra support for elbows and arm muscles.
- Inner elastic bands to support the deltoid, triceps and trapezoid muscles.
- Reduction of muscular vibration
- Breathable
- Insertion of high quality Elasthane fibres for permanent maintenance of the garment's shape
- Seamless elastic fabric

- Maillot à manches longues avec col rond conçu pour améliorer la posture et le rendement
- Exosquelette pour soutien postural
- Soutien ciblé pour les muscles de la partie haute du dos, les articulations des épaules et la coiffe des rotateurs
- Soutien extra pour les coudes et les muscles des bras
- Bandes élastiques internes de soutien du deltoïde, du triceps et du trapèze
- Réduction des vibrations musculaires
- Respirant
- Introduction de fibres Elastan de haute qualité pour toujours maintenir la forme du vêtement.
- Tissu élastique sans coutures

SAIPH

ACTIVE
TENS

| | | | | | | |
|------|--|---------------|--|--------|--------------|------|
| 2024 | | MADE IN ITALY | OEKO-TEX® STANDARD 100 CERTIFIED | ADULT | S/M/L/XL/XXL | U700 |
| | | | | JUNIOR | XS | U701 |

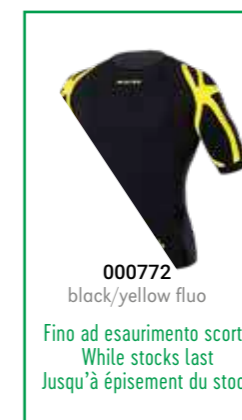
91% POLYAMIDE 9% ELASTAN



002510
black/red



003708
white/cyan



000772
black/yellow fluo

Fino ad esaurimento scorte
While stocks last
Jusqu'à épuisement du stock

- Collo a giro progettata per migliorare postura e rendimento
- Esoscheletro a supporto posturale
- Supporto mirato per i muscoli della parte alta della schiena, articolazioni delle spalle e cuffie dei rotatori
- Supporto extra per gomiti e muscoli delle braccia
- Fasce elastiche interne a sostegno del deltoide, tricipite e trapezio
- Riduzione della vibrazione muscolare
- Traspirante
- Inserimento di fibre di Elastan di alta qualità per mantenere sempre la forma dell'indumento
- Tessuto elastico senza cuciture

- Short-sleeve shirt with crew neck designed to improve posture and performance.
- Exoskeleton for postural support.
- Targeted support for the muscles in the upper part of the back, shoulders and rotator cuffs.
- Extra support for elbows and arm muscles.
- Inner elastic bands to support the deltoid, triceps and trapezoid muscles.
- Reduction of muscular vibration
- Breathable
- Insertion of high quality Elasthane fibres for permanent maintenance of the garment's shape
- Seamless elastic fabric

- Maillot à manches courtes avec col rond conçu pour améliorer la posture et le rendement
- Exosquelette pour soutien postural
- Soutien ciblé pour les muscles de la partie haute du dos, les articulations des épaules et la coiffe des rotateurs.
- Soutien extra pour les coudes et les muscles des bras
- Bandes élastiques internes de soutien du deltoïde, du triceps et du trapèze
- Réduction des vibrations musculaires
- Respirant
- Introduction de fibres Elastan de haute qualité pour toujours maintenir la forme du vêtement.
- Tissu élastique sans coutures

CALEYO

ACTIVE
TENS

| | | | | | | |
|------|--|---------------|--|--------|--------------|------|
| 2024 | | MADE IN ITALY | OEKO-TEX® STANDARD 100 CERTIFIED | ADULT | S/M/L/XL/XXL | U708 |
| | | | | JUNIOR | XS | U709 |

91% POLYAMIDE 9% ELASTAN



003708
white/cyan



000772
black/yellow fluo

Fino ad esaurimento scorte
While stocks last
Jusqu'à épuisement du stock

- 3/4 che aiuta l'allineamento posturale di fianchi, cosce e dell'articolazione rotulea
- Esoscheletro altamente flessibile
- Supporto mirato per fianchi e ginocchia
- Traspiranti
- Inserimento di fibre di Elastan di alta qualità per mantenere sempre la forma dell'indumento
- Tessuto elastico senza cuciture

- 3/4 trousers that assist the postural training of hips, thighs and patellar articulation
- Highly flexible exoskeleton
- Targeted supports for hips and knees
- Breathable
- Insertion of high quality Elasthane fibres for permanent maintenance of the garment's shape
- Seamless elastic fabric

- Pantalon 3/4 qui aide l'alignement postural des hanches, des cuisses et de l'articulation rotulienne
- Exosquelette très flexible
- Support ciblé pour hanches et genoux
- Respirant
- Introduction de fibres Elastan de haute qualité pour toujours maintenir la forme du vêtement.
- Tissu élastique sans coutures

ARRIUS

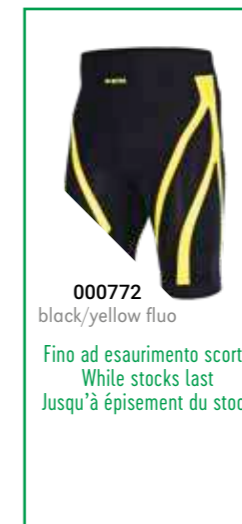
ACTIVE
TENS

| | | | | | | |
|------|--|---------------|--|--------|--------------|------|
| 2024 | | MADE IN ITALY | OEKO-TEX® STANDARD 100 CERTIFIED | ADULT | S/M/L/XL/XXL | U705 |
| | | | | JUNIOR | XS | U706 |

91% POLYAMIDE 9% ELASTAN



003708
white/cyan



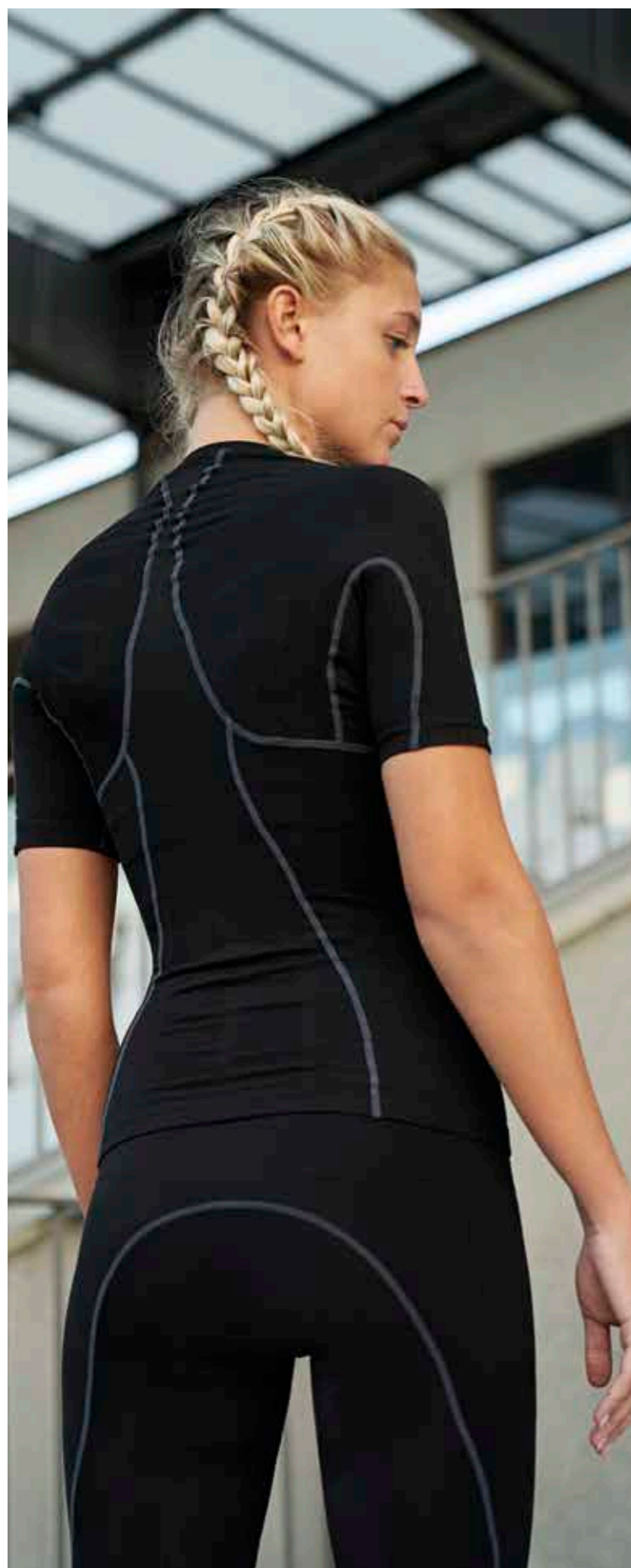
000772
black/yellow fluo

Fino ad esaurimento scorte
While stocks last
Jusqu'à épuisement du stock

- Progettato per sostenere quadricipiti, flessori e glutei
- Esoscheletro a supporto posturale.
- Ridotta vibrazione muscolare
- Traspiranti
- Inserimento di fibre di Elastan di alta qualità per mantenere la forma dell'indumento
- Tessuto elastico senza cuciture

- Targeted support for quadriceps, flexors and glutes.
- Exoskeleton for postural support.
- Reduced muscular vibration.
- Breathable.
- Insertion of high quality Elasthane fibres for permanent maintenance of the garment's shape
- Seamless elastic fabric

- Soutien ciblé pour quadriceps, fléchisseurs et fesses
- Exosquelette de soutien postural.
- Vibrations musculaires réduites
- Respirant
- Introduction de fibres Elastan de haute qualité pour toujours maintenir la forme du vêtement.
- Tissu élastique sans coutures



ACTIVE TENSE® LITE

Dopo oltre due anni di ricerca, Erreà® presenta il nuovo Active Tense® Lite.

Gli innovativi capi della linea AT Lite si rivolgono a chi non vuole rinunciare al supporto ergonomico posturale di Active Tense® nella vita quotidiana. Il tessuto estremamente leggero, il design ton su ton e il collo a "V" della maglia rendono i capi AT Lite eleganti, comodi e confortevoli, ideali per essere indossati in qualunque momento della giornata. Allo stesso tempo, l'esoscheletro termosaldato e la costruzione del capo in zone a tensione differenziata offrono un sostegno efficace ad articolazioni e gruppi muscolari contribuendo a migliorare la performance e favorendo il recupero nel dopo gara, allenamento o post-infortunio.

ACTIVE TENSE® LITE

Following more than two years of research, Erreà® presents the new Active Tense® Lite.

The innovative AT Lite apparel is designed for those who want the ergonomic posture support of Active Tense® also in their daily lives. The ultralight fabric, single-colour, "V" neck design of the shirts make AT Lite garments elegant and comfortable, and ideally suited for use at any time during the day. In addition, the heatwelded exoskeleton and the differentiated fitting point construction of the garment provide effective support to joints and muscle groups for improved performance and recovery-rates after competitions, training and injuries.

ACTIVE TENSE® LITE

Après plus de deux ans de recherches, Erreà® présente le nouvel Active Tense® Lite.

Les vêtements innovants de la ligne AT Lite ont été conçus pour ceux qui ne peuvent pas se passer du soutien ergonomique postural d'Active Tense® dans leur activités quotidiennes. Le tissu extrêmement léger, le design ton sur ton et le col en V de ce maillot rendent les vêtements AT Lite élégants, pratiques et confortables, idéaux pour être portés dans toutes les occasions et à tout moment de la journée. En même temps, l'exosquelette thermo-soudé et la structure du vêtement en zones à tension différenciée offrent un soutien efficace aux articulations et aux groupes musculaires permettant d'améliorer la performance et favorisant la récupération après la compétition, l'entraînement ou un accident.

| | | | | | |
|------|---------------|---|--------|--------------|--------|
| 2024 | MADE IN ITALY | OEKO-TEX® CONFIDENCE IN TEXTILES STANDARD 100 074744.0 CENTROCOT Tested for harmful substances. www.oeko-tex.com/standard100 | ADULT | S/M/L/XL/XXL | UMO10C |
| | | | JUNIOR | XS | UMO11C |

94% POLYAMIDE 6% ELASTAN



- Maglia collo a giro, dotata di zone a tensione differenziata ed esoscheletro in resina
- L'esoscheletro in resina si concentra sulla parte superiore del corpo con lo scopo di stabilizzare le spalle e migliorare la postura
- Le fasce elastiche interne sono studiate e realizzate per sostenere il deltoide e il trapezio
- Le zone a tensione differenziata grazie ai diversi attriti determinano effetti stabilizzatori sui muscoli e sulle articolazioni

- Short-sleeve shirt crew neck with differentiated tension zones and exoskeleton in resin
- The resin exoskeleton is positioned and concentrated on the upper part of the body for the purpose of stabilizing the shoulders and improving posture
- The inner elastic bands are designed and produced to support the deltoid and trapezoid muscles
- The differentiated tension zones, because of different frictions, have stabilizing effects on the muscles and joints

- Maillot col rond à manches courtes avec des zones à tension différenciée et un exosquelette en résine
- L'exosquelette en résine est positionné et se concentre sur la partie supérieure du corps dans le but de stabiliser les épaules et d'améliorer la posture
- Les bandes élastiques internes ont été étudiées et réalisées pour soutenir le deltoïde et le trapèze
- Les zones à tension différenciée grâce aux différents frottements déterminent des effets stabilisateurs sur les muscles et sur les articulations

| | | | | | |
|------|---------------|---|--------|--------------|--------|
| 2024 | MADE IN ITALY | OEKO-TEX® CONFIDENCE IN TEXTILES STANDARD 100 074744.0 CENTROCOT Tested for harmful substances. www.oeko-tex.com/standard100 | ADULT | S/M/L/XL/XXL | UPO60Z |
| | | | JUNIOR | XS | UPO61Z |

94% POLYAMIDE 6% ELASTAN



- Dotato di zone a tensione differenziata ed esoscheletro in resina
- L'esoscheletro in resina si concentra sui principali muscoli della coscia per migliorarne la funzionalità
- Le fasce elastiche interne sono realizzate per sostenere i quadricipiti e i flessori e creano un importante supporto alle fasce e alla muscolatura degli adduttori
- La vibrazione muscolare risulta sensibilmente ridotta

- Bermudas with differentiated tension zones and exoskeleton in resin
- The resin exoskeleton is concentrated on the main muscles of the thigh to improve their function
- The inner elastic bands are provided to support the quadriceps and flexors, and create an important support to the muscle fibres of the adductors
- Muscular vibration is noticeably reduced

- Bermuda avec des zones à tension différenciée et un exosquelette en résine.
- L'exosquelette en résine se concentre sur les principaux muscles de la cuisse pour en améliorer la fonctionnalité.
- Les bandes élastiques internes, réalisées pour soutenir les quadriceps et les fléchisseurs, créent un important soutien aux bandes et à la musculature des adducteurs.
- Les vibrations musculaires sont sensiblement réduites



DARYL



2024



ADULT

S/M - L/XL - XXL

UMOBOL

JUNIOR

XXS - XS

UMOB1L

85% POLYAMIDE 10% POLYESTER 5% ELASTANE

- Manica a giro
- Collo a lupetto
- Inserti tridimensionali localizzati nella parte superiore
- Alta traspirabilità
- Rapido assorbimento del sudore
- Effetto "second skin"
- Tecnologia Seamless
- Isolamento termico
- Estrema leggerezza
- Taschino posteriore porta GPS
- Made in Italy

- Set-in sleeves
- Turtleneck
- Three-dimensional inserts on upper portion
- Optimum breathability
- Rapid sweat absorption
- "Second skin" effect
- Seamless technology
- Thermal insulation
- Extreme lightness
- Back pocket for GPS
- Made in Italy

- Manches montées
- Col montant
- Pièces tridimensionnelles situées dans la partie supérieure
- Grande respirabilité
- Absorption rapide de la transpiration
- Effet « deuxième peau »
- Technologie sans coutures
- Isolation thermique
- Légèreté extrême
- Petite poche arrière porte-GPS
- Made in Italy



00120
black



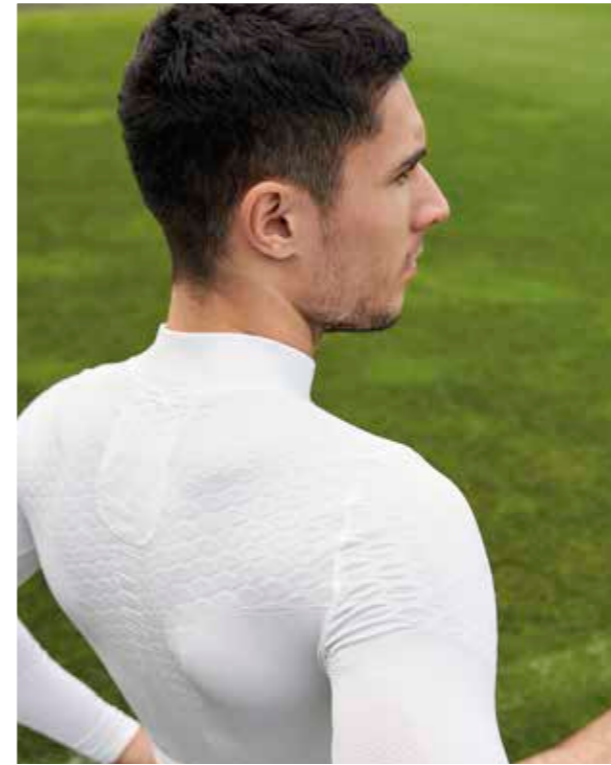
00020
red

00010
white

00090
navy



00070
blue



DAVOR



2024



ADULT

S/M - L/XL - XXL

UMOCOL

JUNIOR

XXS - XS

UMOC1L

85% POLYAMIDE 10% POLYESTER 5% ELASTANE

- Manica e collo a giro
- Inserti tridimensionali localizzati nella parte superiore per mantenere il corpo asciutto e caldo
- Alta traspirabilità
- Rapido assorbimento del sudore
- Effetto "second skin"
- Tecnologia Seamless
- Isolamento termico
- Estrema leggerezza
- Taschino posteriore porta GPS
- Made in Italy

- Set-in sleeves and crew neck
- Three-dimensional inserts on upper portion
- Optimum breathability
- Rapid sweat absorption
- "Second skin" effect
- Seamless technology
- Thermal insulation
- Extreme lightness
- Back pocket for GPS
- Made in Italy

- Manches montées et col rond
- Pièces tridimensionnelles situées dans la partie supérieure
- Grande respirabilité
- Absorption rapide de la transpiration
- Effet « deuxième peau »
- Technologie sans coutures
- Isolation thermique
- Extrême légèreté
- Petite poche arrière porte-GPS
- Made in Italy



00090
navy



00020
red

00010
white

00120
black

00040
green

00130
orange



00150
maroon



00070
blue



00030
yellow



00060
fuchsia



DAVID



2024



ADULT

S/M - L/XL - XXL

UMOD0C

JUNIOR

XS

UMOD1C

85% POLYAMIDE 10% POLYESTER 5% ELASTANE

- Manica e collo a giro
- Inserti tridimensionali localizzati nella parte superiore per mantenere il corpo asciutto e caldo
- Alta traspirabilità
- Rapido assorbimento del sudore
- Effetto "second skin"
- Tecnologia Seamless
- Isolamento termico
- Estrema leggerezza
- Taschino posteriore porta GPS
- Made in Italy

- Set-in sleeves and crew neck
- Three-dimensional inserts on upper portion
- Optimum breathability
- Rapid sweat absorption
- "Second skin" effect
- Seamless technology
- Thermal insulation
- Extreme lightness
- Back pocket for GPS
- Made in Italy

- Manches montées et col rond
- Pièces tridimensionnelles situées dans la partie supérieure
- Grande respirabilité
- Absorption rapide de la transpiration
- Effet « deuxième peau »
- Technologie sans coutures
- Isolation thermique
- Extrême légèreté
- Petite poche arrière porte-GPS
- Made in Italy



00120
black



00020
red



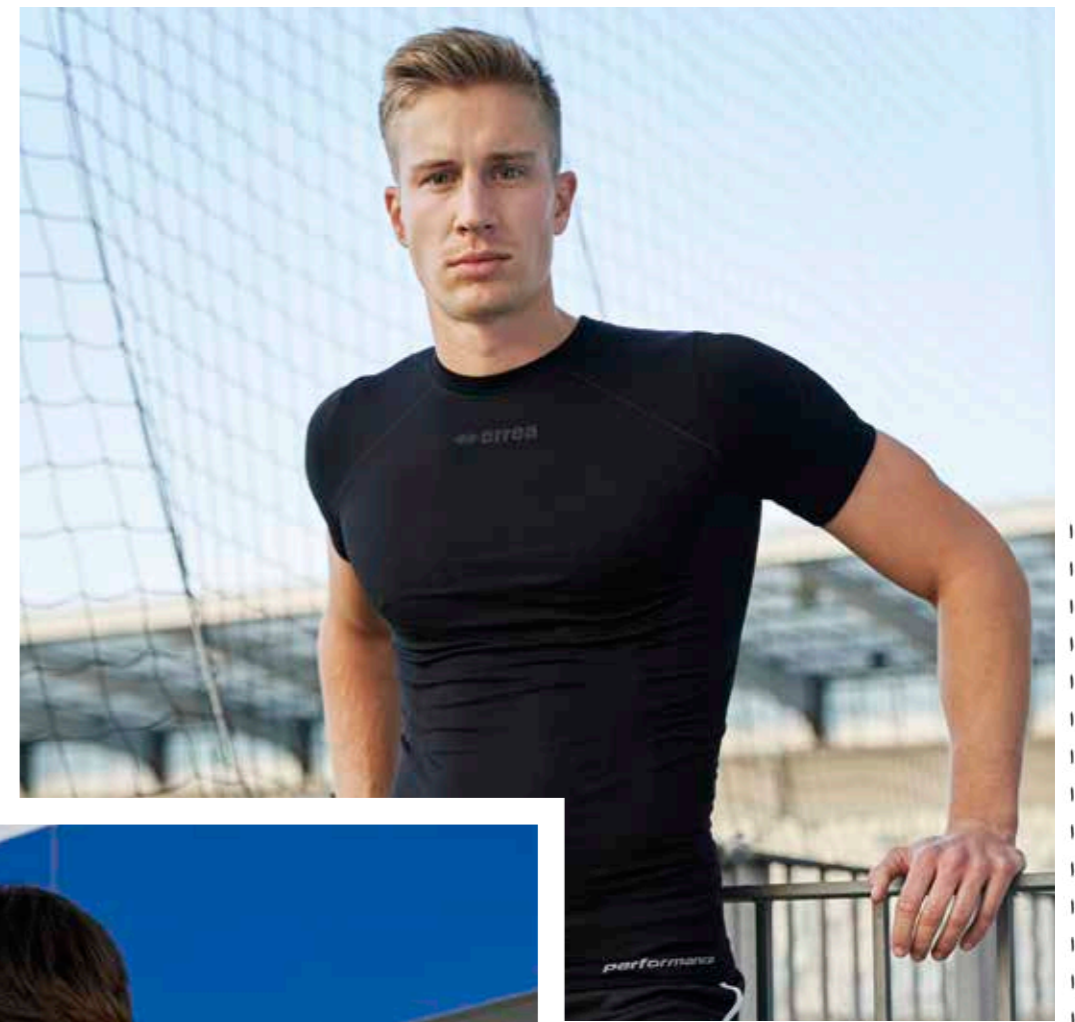
00010
white



00090
navy



00070
blue



ENYA



2024



ADULT

S/M - L/XL - XXL

UMOF0Z

JUNIOR

XS

UMOF1Z

85% POLYAMIDE 15% POLYESTER

- Collo a giro
- Alta traspirabilità
- Rapido assorbimento e dispersione del sudore
- Effetto "second skin"
- Tecnologia Seamless
- Ideale regolazione termica corporea
- Estrema leggerezza
- Taschino posteriore porta GPS
- Made in Italy

- Crew neck
- Optimum breathability
- Rapid absorption and elimination of sweat
- "Second skin" effect
- Seamless technology
- Ideal body temperature regulation
- Extreme lightness
- Back pocket for GPS
- Made in Italy

- Col rond
- Grande respirabilité
- Absorption rapide et dispersion de la transpiration
- Effet « deuxième peau »
- Technologie sans coutures
- Régulation thermique corporelle idéale
- Extrême légèreté
- Petite poche arrière porte-GPS
- Made in Italy



00120
black



00010
white



00090
navy



DARIS

2024



| | | |
|--------|----------------------|--------|
| ADULT | S/M - L/XL - XXL/3XL | FMOB0L |
| JUNIOR | YXS - XXS/XS | FMOB1L |

90% POLYESTER 10% ELASTANE

- Manica raglan
- Collo a giro
- Ideale per il periodo invernale
- Isolamento termico
- Raglan sleeve
- Crew neck
- Ideal for wintertime
- Thermal insulation
- Manches raglan
- Ras du cou
- Idéal pour la période hivernale
- Isolation thermique



DAWE

2024



| | | |
|--------|----------------------|--------|
| ADULT | S/M - L/XL - XXL/3XL | FPOB0Z |
| JUNIOR | YXS - XXS/XS | FPOB1Z |

90% POLYESTER 10% ELASTANE

- Elasticizzati
- Elastico in vita
- Elasticated
- Elastic waistband
- Elasticité
- Ceinture élastique



LANA COTONE

2024



| | | |
|--------|--------|-------|
| ADULT | M/L/XL | A3010 |
| JUNIOR | XS | A3011 |

46% POLYESTER 46% COTTON 5% NYLON

Package of 5 pieces for size.

- Manica a giro
- Collo a giro
- Isolamento termico
- Mantiene il corpo asciutto e caldo
- Set-in sleeves
- Crew neck
- Thermal insulation
- It keep the body warm and dry
- Manches montées
- Col rond
- Isolation thermique
- Il garde le corps sec et chaud



SIZE CHART

Se sei al limite tra due taglie, ordina quella immediatamente più piccola per una vestibilità più aderente o quella immediatamente più grande per una vestibilità più comoda.

If you are in between sizes, order the smaller size for a snugger fit or the larger one if you prefer a more comfortable fit.

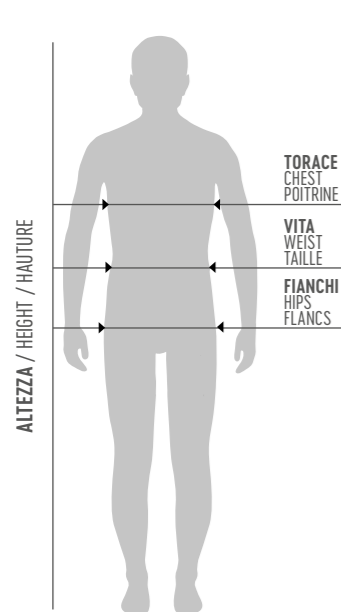
Si vous êtes juste entre deux tailles, commandez la plus petite pour une coupe plus ajustée ou la plus grande pour une coupe plus confortable.



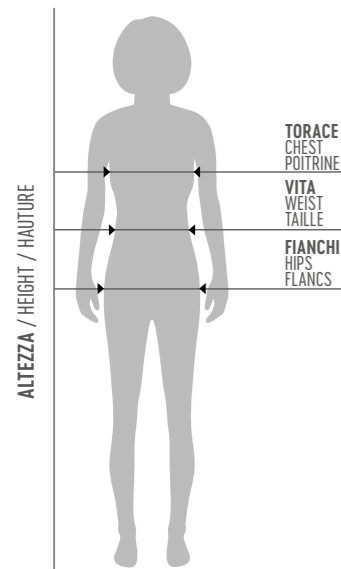
VESTIBILITÀ ADERENTE
VERY CLOSE FITTING
VESTIBILITÀ ADERENTE

VESTIBILITÀ SEMI-ADERENTE
CLOSE FITTING
VESTIBILITÀ SEMI-ADERENTE

VESTIBILITÀ NORMALE
NORMAL FITTING
VESTIBILITÀ NORMALE



| TAGLIE UOMO / SIZES MAN / TAILLES HOMME | | | | | | | | | | |
|---|------|---------|-----------------------------|-----------|-------------------------|----------|---------------------------|-----------|------------------------------|-----------|
| | EU | IT | TORACE CHEST POITRINE | | VITA WAIST TAILLE | | FIANCHI HIPS FLANCS | | ALTEZZA HEIGHT HAUTEUR | |
| | | | cm | inches | cm | inches | cm | inches | cm | inches |
| KID | 3YXS | 22-24 | | | | | | | 98-108 | 39-42.5 |
| | 2YXS | 26-28 | | | | | | | 110-120 | 42.5-47.2 |
| JUNIOR | YXS | 30-32 | 64-72 | 25-28 | 54-60 | 21.26-24 | 66-74 | 26-29 | 122-132 | 48-52 |
| | XXS | 34-36 | 72-80 | 28-31 | 60-66 | 24-26 | 74-82 | 29-32 | 134-144 | 52.8-56.7 |
| | XS | 38-40 | 80-88 | 31-35 | 66-72 | 26-28 | 82-90 | 32-35 | 146-156 | 57.5-61.4 |
| ADULT | S | 42-44 | 90-94 | 35-37 | 72-76 | 28-30 | 92-96 | 36-38 | 167-172 | 65.7-67.7 |
| | M | 46-48 | 94-98 | 37-39 | 76-80 | 30-31 | 96-100 | 38-39.4 | 173-178 | 68.1-70.1 |
| | L | 50-52 | 98-102 | 39-40.2 | 80-84 | 31-33 | 100-104 | 39.4-40.9 | 179-184 | 70.5-72.4 |
| | XL | 54 | 102-106 | 40.2-41.7 | 84-88 | 33-35 | 104-108 | 40.9-42.5 | 185-190 | 72.8-74.8 |
| | XXL | 56 | 106-110 | 41.7-43.3 | 88-92 | 35-36 | 108-112 | 42.5-44.1 | 191-196 | 75.2-77.2 |
| | 3XL | 58 | 110-114 | 43.3-44.9 | 92-94 | 36-37 | 112-116 | 44.1-45.7 | 197-202 | 77.6-79.5 |
| 4XL | 60 | 114-118 | 44.9-46.5 | 94-96 | 37-38 | 116-120 | 45.7-47.2 | 203-208 | 79.9-81.9 | |



| TAGLIE DONNA / SIZES WOMAN / TAILLES FEMME | | | | | | | | | | |
|--|------|---------|-----------------------------|-----------|-------------------------|----------|---------------------------|-----------|------------------------------|-----------|
| | EU | IT | TORACE CHEST POITRINE | | VITA WAIST TAILLE | | FIANCHI HIPS FLANCS | | ALTEZZA HEIGHT HAUTEUR | |
| | | | cm | inches | cm | inches | cm | inches | cm | inches |
| KID | 3YXS | 24-26 | | | | | | | 98-108 | 39-42.5 |
| | 2YXS | 26-28 | | | | | | | 110-120 | 42.5-47.2 |
| JUNIOR | YXS | 30-32 | 64-72 | 25-28 | 54-60 | 21.26-24 | 66-74 | 26-29 | 122-132 | 48-52 |
| | XXS | 34-36 | 72-80 | 28-31 | 60-66 | 24-26 | 74-82 | 29-32 | 134-144 | 52.8-56.7 |
| | XS | 38-40 | 80-88 | 31-35 | 66-72 | 26-28 | 82-92 | 32-36 | 146-156 | 57.5-61.4 |
| ADULT | S | 42-44 | 84-88 | 33-35 | 68-72 | 27-28 | 92-96 | 36-38 | 164-168 | 64.6-66.1 |
| | M | 46-48 | 88-92 | 35-36 | 72-76 | 28-30 | 96-100 | 38-39.4 | 169-173 | 66.5-68.1 |
| | L | 50-52 | 92-96 | 36-38 | 76-80 | 30-31 | 100-104 | 39.4-40.9 | 174-178 | 68.5-70.1 |
| | XL | 54 | 96-100 | 38-39.4 | 80-84 | 31-33 | 104-108 | 40.9-42.5 | 179-183 | 70.5-72 |
| | XXL | 56 | 100-104 | 39.4-40.9 | 84-88 | 33-35 | 108-112 | 42.5-44.1 | 184-188 | 72.4-74 |
| | 3XL | 58 | 104-108 | 40.9-42.5 | 88-92 | 35-36 | 112-116 | 44.1-45.7 | 189-193 | 74.4-76 |
| 4XL | 60 | 108-112 | 42.5-44.2 | 92-96 | 36-38 | 116-120 | 45.7-47.2 | 194-198 | 76.4-78 | |

GUANTI / GLOVES / GANTS

Per prendere la misura giusta della larghezza della mano, segui esattamente il disegno illustrativo.

Follow the drawing to measure the hand's width in the proper way and use the chart to figure out which size best fits your hand.

Pour mesurer la largeur de la main suivre le dessin et le tableau.



| GLOVES SIZING CHART | | | | | | | |
|---------------------|--------|--------|--------|--------|--------|-------|---------|
| 7,5 | 8 | 8,5 | 9 | 9,5 | 10 | 10,5 | 11 |
| 8,2 cm | 8,5 cm | 8,8 cm | 9,1 cm | 9,4 cm | 9,7 cm | 10 cm | 10,3 cm |



SIZE GUIDE

Misura la circonferenza della tua gamba 15 cm sotto la tua rotula.

Measure the circumference of your leg at a point 15 cm below the middle of your kneecap.

Mesure ton tour de jambe 15 cm au-dessous de la rotule.

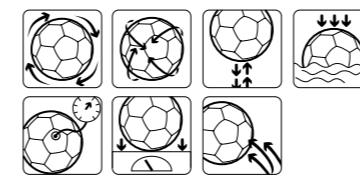


| SOCKS SIZING CHART | | | | | | | |
|--------------------|-------|-------|-------|--------|-------|-------|-------|
| SIZE | KID | JR | AD | XS | M | L | XL |
| EU | 35/38 | 39/42 | 42/46 | 31/34 | 35/38 | 39/42 | 43/47 |
| USA | 3.5/6 | 7/9 | 9/12 | 1/3 | 3.5/6 | 7/9 | 10/13 |
| UK | 2.5/5 | 6/8 | 8/11 | 12.5/2 | 2.5/5 | 6/8 | 9/12 |

| KNEEPAD SIZING CHART | | |
|----------------------|-------|-----------|
| | cm | inches |
| XS | 30-33 | 12-13 |
| S | 33-35 | 13-13,7 |
| M | 35-37 | 13,7-14,5 |
| L | 37-40 | 14,5-15,7 |
| XL | 40-45 | 15,7-17,7 |

| SHOES SIZING CHART | | | | | | | | | | | | | | |
|--------------------|-----|----|----|----|----|-----|----|----|----|------|------|----|----|----|
| EU | 35 | 36 | 37 | 38 | 39 | 40 | 41 | 42 | 43 | 44 | 45 | 46 | 47 | 48 |
| USA | 3.5 | 4 | 5 | 6 | 7 | 7.5 | 8 | 9 | 10 | 10.5 | 11 | 12 | 13 | 14 |
| UK | 2.5 | 3 | 4 | 5 | 6 | 6.5 | 7 | 8 | 9 | 9.5 | 10.5 | 11 | 12 | 13 |

PALLONI/ BALLS / BALLON



Terreni asciutti
Dry grounds



Terreni con neve
Ground covered with snow



Terreni con fango e pioggia
Muddy and wet grounds



Indoor



Terreni con erba sintetica
Artificial pitch

WASHING AND GARMENT CARE

IT

Per garantire i più alti standard qualitativi dei capi, Erreà controlla e verifica scrupolosamente tutti i tessuti impiegati.

Le fibre naturali del cotone, i tessuti tecnici e le felpe riescono a mantenere inalterate nel tempo le loro caratteristiche e il loro comfort se trattate con la massima cura.

Vi consigliamo pertanto di leggere con attenzione i consigli d'uso, di lavaggio e di manutenzione riportati sulle etichette dei capi.

EN

To guarantee the highest possible quality standards for all garments, Erreà scrupulously control all the fabrics utilised in production.

The natural cotton, technical fabrics and sweatshirt materials will maintain their characteristics and comfort over time, if cared for correctly.

We therefore ask that you read carefully, the washing and maintenance instructions found on the label of each garment.

FR

Pour assurer la meilleure qualité, Erreà vérifie et contrôle les tissus utilisés.

Les fibres naturelles du coton, les tissus techniques et le molleton gardent intactes dans le temps leurs caractéristiques s'ils sont traités avec attention et soin.

Nous vous recommandons, donc, de suivre attentivement les étiquettes avec les conseils pour l'utilisation, le lavage et la maintenance des produits.



L'etichetta con i consigli di lavaggio è specifica per ogni indumento. Erreà garantisce che potete seguire i suoi consigli alla "lettera".

The washing instructions label is specific for every garment. Please follow it carefully.

L'étiquette pour les conseils de lavage est spécifique pour chaque article. Erreà assure que ses conseils sont à suivre "à la lettre".

LAVAGGIO / WASHING / LAVAGE

Lavare in lavatrice (max. 30°)
Washing temperature max 30°
Lavage machine (max 30°)

CANDEGGIO / BLEACHING / BLANCHIMENT

Non utilizzare candeggina
Do not bleach
Ne pas utiliser de produits blanchissants

LAVAGGIO A SECCO / DRY CLEANING / NETTOYAGE A SEC

Utilizzare i solventi in uso (salvo la trielina)
Do not use trichloroethylene
Utiliser les solvants en commerce sauf le trichloréthylène

ASCIUGATURA / DRYING / SECHAGE

Non utilizzare l'asciugatrice
Do not tumble dry
Ne pas utiliser le séchoir

STIRATURA / IRONING / REPASSAGE

Stirare a temperatura dolce senza vapore (110°C)
Iron at mild temperature without steam (110°C)
Repasser à température douce sans vapeur

**WE
STAND
FOR CLEAN
SPORT.
EVEN FOR
YOUR
SKIN.**

Sport is the most beautiful thing in the world, and nothing must be allowed to pollute that beauty. That is why, besides developing increasingly high-performance materials that have a low impact on the environment, we at Erreà are the first teamwear company in Europe to have been awarded **STANDARD 100 by OEKO-TEX®** certification. This certification sets extremely strict limits for substances harmful to health, which is why our fabrics are highly safe in all conditions. **With Erreà, sport and health run side by side.**

**POUR
UN
SPORT
SAIN.
JUSQU'À
SUR
LA PEAU.**

Le sport est la plus belle chose au monde et rien ne doit l'entacher. C'est pourquoi, au-delà de la conception de matières toujours plus performantes et respectueuses de l'environnement, Erreà est le premier fabricant européen de vêtements de sport à avoir obtenu la certification **STANDARD 100 by OEKO-TEX®**. Une attestation qui fixe des limites extrêmement strictes en matière de substances nocives pour la santé. Voilà pourquoi nos tissus garantissent un haut niveau de sécurité en toutes conditions d'utilisation. **Avec Erreà, sport et santé vont toujours de pair.**

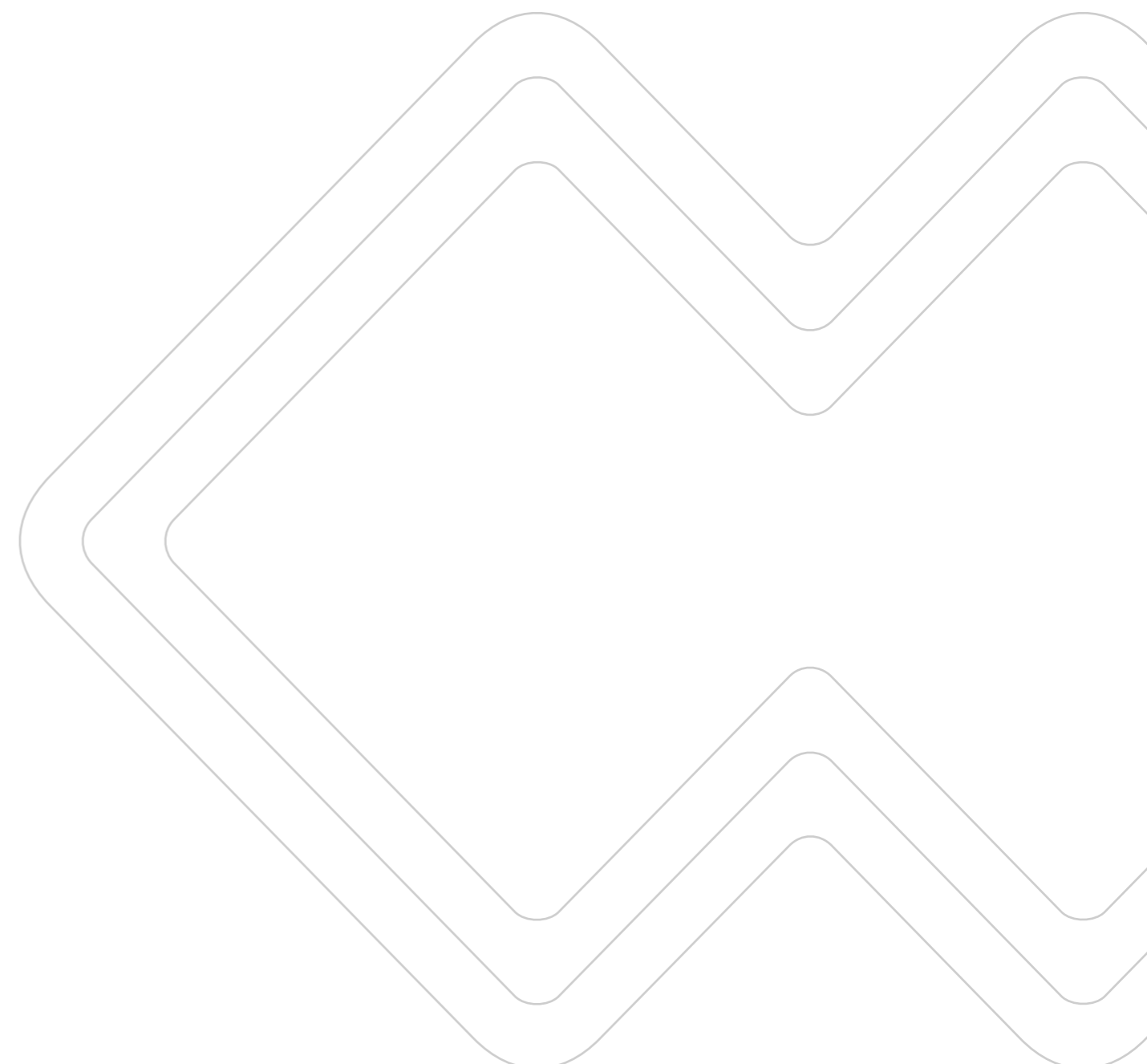


**SIAMO
PER
LO SPORT
PULITO.
ANCHE
SULLA
PELLE.**

Lo sport è la cosa più bella del mondo e nulla deve inquinare la sua bellezza. Per questo, oltre a studiare materiali sempre più performanti e a basso impatto ambientale, noi di Erreà siamo la prima azienda in Europa nel settore teamwear ad aver ottenuto la certificazione **STANDARD 100 by OEKO-TEX®**. Un attestato che pone limiti estremamente rigorosi in tema di sostanze nocive per la salute. Ecco perché i nostri tessuti garantiscono un elevato livello di sicurezza in qualsiasi condizione di impiego. **Con Erreà, sport e salute corrono sempre insieme.**



erreà.com



PRODUTTORI DAL 1988

MANUFACTURERS SINCE 1988 - FABRICANTS DEPUIS 1988



errea

ERREÀ SPORT S.p.A.

Via G. Di Vittorio, 2/1
43056 S. Polo di Torrile (Parma) - Italy

errea.com

info@errea.it



PRODUTTORI DAL 1988

CERTIFIED QUALITY
MANAGEMENT SYSTEM



UNI EN ISO 9001:2015

